



LS 50-L FLEX

Battery-powered
hydraulic punch driver
with 360° rotating head

LS 50-L FLEX

Battery-powered hydraulic punch driver

Flexible and light.



360° rotating head



Flexible aluminium head

Punch capacity:
Special shape punch 138x138 mm (mild steel 2.5 mm)
Round punch 150 mm (mild steel 3 mm) /
63 mm (stainless steel 2 mm)

Punching force 60kN

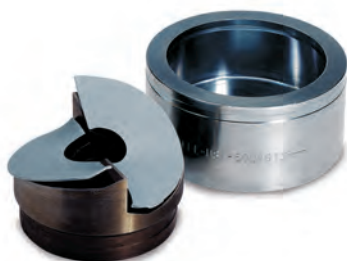
Weight incl. battery 2.12 kg

Automatic limit stop

Non-slip rubber grip

LED illuminates working area

Lithium-Ion technology



Slim and compact design



Artikel-Nr.
LS50LFLEX

Standard and SlugBuster® – Round punches for ST37

Dimensions in mm	PG	ISO	Max. material thickness	Standard Blechlocher			SLUG BUSTER®			
				Punch	Die	Draw stud	Stempel	Matritze	Draw stud	
									LS 50LFLEX	LS 60 L
15.2	Pg 9	ISO 16	2.0	50213164	50320025	51300430	50319698	50320025	51300430	51300430
15.9			1.5	50042238	50042246	51300430	–	–	–	–
16.2			2.0	50351931	50351621	51300430	50351630	50351621	51300430	51300430
18.6	Pg 11	ISO 20	2.0	50177001	50320033	51300430	50319701	50320033	51300430	51300430
19.1			2.0	50039989	50039997	51300430	–	–	–	–
20.4			2.0	50176978	50320041	51300430	50319710	50320041	51300430	51300430
20.6	Pg 16	ISO 25	2.0	50042262	50042254	51300430	–	–	–	–
22.5			2.0	51040060	51147220	51300430	50317563	51147220	51300430	51300430
23.8			2.0	50042386	50042378	51300430	–	–	–	–
25.4	Pg 21	ISO 32	2.0	50039865	50351648	51300430	50351656	50351648	51300430	51300430
27.0			2.0	50042408	50042424	51300430	–	–	–	–
28.3			3.0	51040080	51069720	51300430	–	–	–	–
28.6	Pg 29	ISO 40	2.0	50039903	50039911	51300430	–	–	–	–
30.5			2.0	50362828	50362798	52045040	50362844	50362798	51300430	51300430
30.5			3.5	–	–	–	50602373	50362780	50318721	52045040
31.8	Pg 36	ISO 50	1.5	50040022	50040030	51300430	–	–	–	–
32.5			3.5	50244590	50351680	50318721	50351699	50351680	50318721	52045040
33.4			1.5	50065874	50065866	50318721	–	–	–	–
34.6	Pg 42	ISO 63	3.5	50040103	50040111	50318721	50317580	50040111	50318721	52045040
34.9			3.5	50047345	50047353	50318721	–	–	–	–
37.0			3.5	50183311	50320084	50318721	50319752	50320084	50318721	52045040
38.1	Pg 48	ISO 80	3.5	50047361	50070444	50318721	–	–	–	–
40.5			3.5	50244620	50351591	50318721	50351583	50351591	50318721	52045040
41.3			3.5	50042513	50042505	50318721	–	–	–	–
43.2	Pg 54	ISO 100	3.5	51069740	50040138	50318721	50317598	50040138	50318721	52045040
44.5			3.5	50042572	50042564	50318721	–	–	–	–
47.0			3.5	50176870	50320092	50318721	50319760	50320092	50318721	52045040
47.6	Pg 60	ISO 125	3.5	50042483	50042491	50318721	–	–	–	–
49.6			3.5	50069780	50040618	50318721	50317601	50040618	50318721	52045040
50.8			3.5	50042327	50351613	50318721	50351605	50351613	50318721	52045040
54.0	Pg 72	ISO 160	3.5	50042459	50361732	50318721	50361724	50361732	50318721	52045040
57.2			3.5	50040588	50040596	50318721	–	–	–	–
60.0			3.5	50176900	50320114	50318721	50319787	50320114	50318721	52045040
61.5	Pg 84	ISO 200	3.5	50040626	50040634	50318721	50317610	50040634	50318721	52045040
64.0			3.5	50042343	50042335	50318721	50351672	50351664	50318721	52045040
66.7			3.5	50042521	50069977	52045040	–	–	–	–
69.9	Pg 96	ISO 250	3.5	50042475	50042467	52045040	–	–	–	–
70.6			3.5	50024450	50024434	52045040	–	–	–	–
74.0			3.5	50041754	50041770	52045040	–	–	–	–
76.2	Pg 108	ISO 315	3.5	50042599	50042580	52045040	–	–	–	–
79.4			3.5	50063634	50063626	52045040	–	–	–	–
82.0			3.5	50189050	50189069	52045040	–	–	–	–
89.8	Pg 120	ISO 400	3.5	50041800	50041835	52045040	–	–	–	–
95.3			3.5	50052659	50052667	52045040	–	–	–	–
102.7			3.5	50046535	50046527	52045040	–	–	–	–
115.4	Pg 144	ISO 500	3.5	50046551	50046543	52045040	–	–	–	–
120.0			3.5	50214896	50214918	52045040	–	–	–	–
144.1			3.5	50054473	50054481	52045040	–	–	–	–



Standard punches

SLUG BUSTER®

SLUG SPLITTER®

Rectangular punches

Square punches

Round punches

SLUG SPLITTER® – Round punches for stainless steel

Dimensions in mm	PG	ISO	Max. material thickness	SLUG SPLITTER®		
				Punch	Die	Draw stud
						LS 60 Plus, 50159062, 50250973, 50342916, 50342991
15.2	Pg 9	ISO 16	2.5	50311174	50311263	50294512
16.2			2.5	50045997	50045989	50294512
18.6			2.5	50311190	50311280	50294512
20.4	Pg 13	ISO 20	2.5	50311204	50311298	50294512
22.5			3.5	50281542*	50281550*	50294512
25.4	Pg 11	ISO 25	3.5	50046020	50046012	50294512
28.3			3.5	50281569*	50281577*	50294520
30.5			3.5	50364901	50364898	50294520
32.5	Pg 21	ISO 32	3.5	50046055	50046039	50294520
34.6			3.5	50281585*	50281593*	50294520
37.0			3.5	50311220	50311352	50294520
40.5	Pg 29	ISO 40	3.5	50046080	50046071	50294520
43.2			3.5	50281607*	50281615*	50294520
47.0			3.5	50311239	50311310	50294520
49.6	Pg 36	ISO 50	3.5	50281623*	50281631*	50294520
50.8			3.5	50046110	50046098	50294520
54.0			3.5	50311247	50311328	50294520
60.0	Pg 42	ISO 63	3.5	50311255	50311336	50294520
61.5			3.5	50281658*	50281666*	50294520
64.0			3.5	50046144	50046136	50294520

* Slug Splitter SC® - selbstzentrierend

Rectangular punches

Dimensions in mm	Max. material thickness	Complete Unit ¹⁾
11.1 x 22.2	1.5	50600257
17.0 x 19.0	2.0	50610281
19.1 x 29.0	2.0	50600311
19.1 x 33.3	2.0	50600346
21.9 x 25.9	2.0	50600370
22.0 x 30.0	2.0	50600400
22.0 x 42.0	2.0	50600435
25.1 x 29.0	2.0	50600478
31.8 x 35.1	2.0	50600508
29.0 x 71.0	3.0	52045296
30.0 x 90.0	3.0	52045297
33.3 x 66.7	3.0	50600532
35.0 x 52.0	3.0	50600567
35.0 x 65.0	3.0	50600591
35.0 x 82.0	2.0	50600621
35.0 x 112.0	2.0	50600656
46.0 x 92.0	3.0	50600680
57.2 x 88.9	3.0	50600710
68.0 x 138.0	2.0	50600745

Square punches

Dimensions in mm	Max. material thickness	Complete Unit ¹⁾
12.7 x 12.7	1.5	50600010
15.9 x 15.9	2.0	50600044
19.1 x 19.1	2.0	50610076
22.4 x 22.4	2.0	50610106
24.0 x 24.0	2.0	50610137
25.4 x 25.4	2.0	50600168
45.0 x 45.0	3.0	50115723
46.0 x 46.0	3.0	50600192
50.8 x 50.8	3.0	50601687
68.0 x 68.0	3.0	50601717
92.0 x 92.0	3.0	50601741
104.8 x 104.8	2.0	50601776
138.0 x 138.0	2.0	50602349

Special shape punches for heavy duty connectors

Dimensions in mm	Max. material thickness	Operation	Complete Unit ¹⁾	Draw stud
36.0 x 52.0	3.0	Hydraulisch	52033816	52033836
36.0 x 65.0	3.0	Hydraulisch	52033817	52033836
36.0 x 86.0	3.0	Hydraulisch	52033818	52033836
36.0 x 91.0	3.0	Hydraulisch	52033819	52033836
36.0 x 112.0	3.0	Hydraulisch	52033820	52033836
46.0 x 86.0	3.0	Hydraulisch	52033831	52033836
46.0 x 112.0	3.0	Hydraulisch	52033832	52033836

HAN Yellock® 30 with 4 centering points

Dimensions in mm	Max. material thickness	Complete Unit ¹⁾	Draw stud	Counter nut
47.2 x 56.4	3.0 ST37	52058591	52033836	52033844
47.2 x 56.4	3.0 VA	52058592	52033836	52033844

¹⁾ Punch unit including punch, die, draw stud and counter nut

LS 50-L FLEX

Always applicable.

Battery powered punch driver for every angle.

The design of the aluminium head of the **LS 50-L FLEX** allows the head to rotate by 360°.

The combination of the slim and compact design and low weight qualifies the LS 50-LFLEX for operation in hard to reach areas. The automatic limit stop prevents the tools from damage and increases lifetime.

Highlights

- 360° rotating head for operations in hard to reach areas
- Automatic limit stop
- Lithium-Ion technology reduces charging time and increases operating time
- Low weight of 2.12 kg
- Applicable with all Greenlee punching tools
- Compact design and ergonomic designed housing facilitates fatigue-proof operation
- Just „one“ trigger allows easy handling
- White LED illumination of working area
- High punching force (60kN)

Scope of supply



LGL1	Quick-charger for 18V Li-Ion-Batteries
RAL2	Battery 18 V / 3,0AH Li-Ion (45Wh)
50318721	Draw stud for hydraulic operation 19.0x105 mm
50032488	Spacer, short
52049371	HSS Co5 step bit
51300430	Draw stud 9.5x71 mm
50339672	Adapter for 51300430
KK50LFLEX	Plastic case



Draw studs



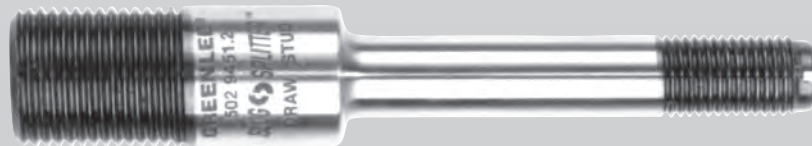
51300430
Draw stud for hydraulic operation
9.5 X 71 mm



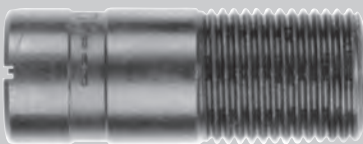
50318721
Draw stud for hydraulic operation
19.0 X 105 mm



50294520
Draw stud
Ø 19 x 140 mm



50294512
Draw stud
Ø 11.1 x 108 mm



50339672
Adapter 19.0x48 mm with internal thread 9.5 mm

All draw studs according to full-scale.

Gustav Klauke GmbH
Auf dem Knapp 46
D-42855 Remscheid

Phone: +49 (0) 2191 / 907 - 0
Fax: +49 (0) 2191 / 907 - 141

E-Mail: info@klauke.textron.com
Internet: www.klauke.com

Strong brands for your success:

Klauke[®]



GREENLEE
A Textron Company